

# Lincoln : Title One School

October 22, 2019



# What is a Title One School?

Title I of the Every Student Succeeds Act (ESSA/ESEA) is a federal funding program designed to close achievement gaps and ensure that all children have a fair, equal, and significant opportunity to obtain a high-quality education.



# How does Lincoln Utilize Title One Funding?

Many schools receiving Part A funding - this includes Lincoln - operate **Schoolwide Programs**, implementing overall school improvements to ensure that systems, practices, and programs are effectively aligned to reduce gaps and support every student's achievement.

A school must have a minimum of 40% poverty to enroll in the School Wide Program...Lincoln is at 79% free and reduced.

# Requirements of Title One Funding

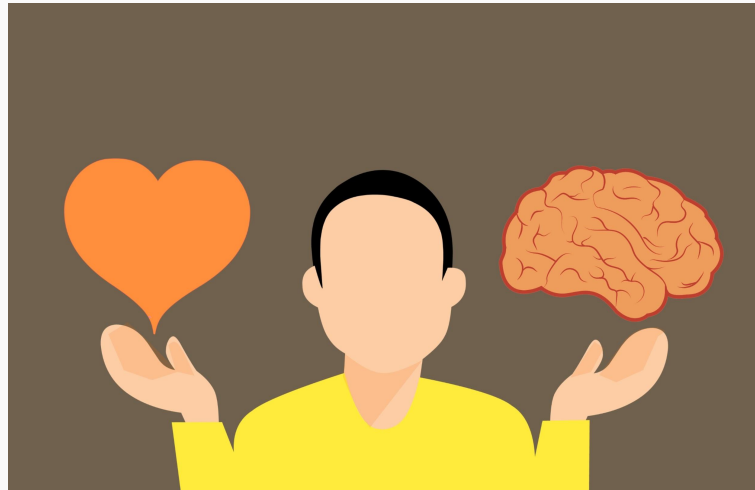
PLAN



- A comprehensive needs assessment that identifies the school's strengths and challenges in key areas affecting student achievement
- A comprehensive plan for long-term improvement, created with stakeholders and designed to address identified needs

# What is Lincoln doing?

We are aligning our needs assessments with the District plan of Whole Child Whole Wausau by addressing the following areas:



# Attendance

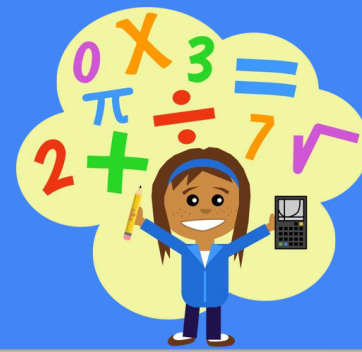


Lincoln students in grades K and 1 have the lowest, current average full day attendance rate of 91.77% for the 2018-19 school year. Students in grades K and 1 will increase their full day attendance rate to an overall average of 94%; with students in grades 2-5 maintaining or improving their overall attendance.

Action Steps include newsletter updates bi-weekly on attendance...newsletter articles on attendance...students attendance app created for sharing at p/t conferences.



# ELA and Math

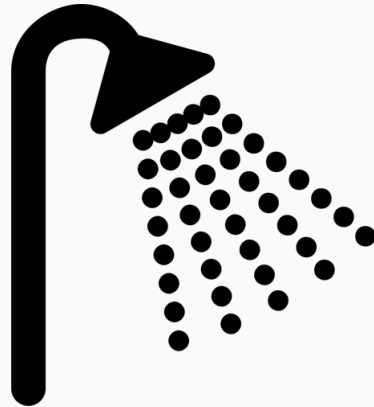
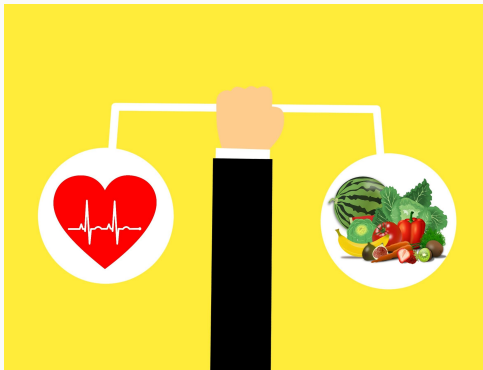


During the 2018-19 school year 24.5% of our students scored Proficient or Advance in the area of Language Arts and 28% of our students scored Proficient or Advanced in overall Mathematics as indicated on the state report card. Lincoln will increase the percentage of students scoring proficient or advanced to 30% and 34% respectively for the 2019-20 school year.

Action Steps: Study of *Differentiation and the Brain*; weekly professional learning communities around math and reading; coaching

# Community Partnerships

Lincoln will maintain and/or increase the number of community partners that we have established to meet student and staff social/emotional and academic needs.





# Family Engagement

<https://docs.google.com/document/d/1w6JSilu9Lg58oEzFNZ3-WNrfsnrLF-5XZasnUIVbUHU/edit?usp=sharing>



PTO -  
Parent/Teacher  
Organization

PBIS - Positive  
Behavioral  
Interventions &  
Supports

Please sign up for  
parent/teacher  
conferences